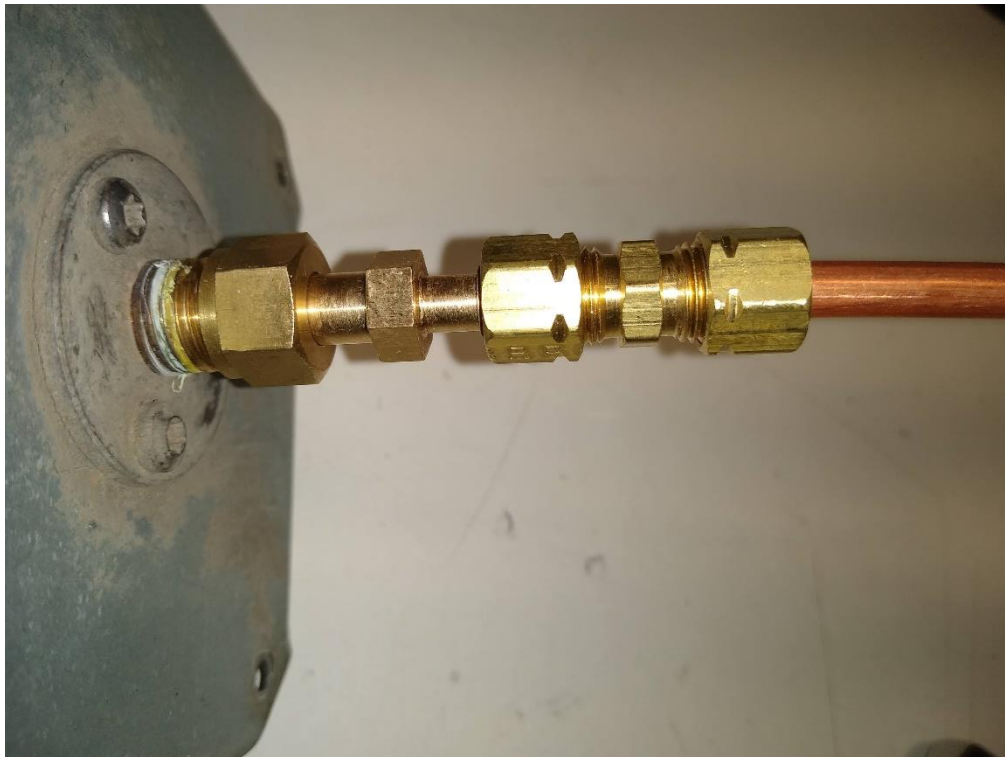


REVISED PROPEX HS2211 PROPANE FITTING

In May of 2021, Propex revised the propane fitting included in the HS2211 unit. The new fitting requires the use of an adapter fitting to connect to the ¼" tubing used in your installation. When purchasing the heater, please select either a 90-degree elbow or straight through fitting to complete your installation.



INSTALLATION OF THE REVISED HS2211 PROPANE FITTING

Note the installation order illustrated in the photo below.



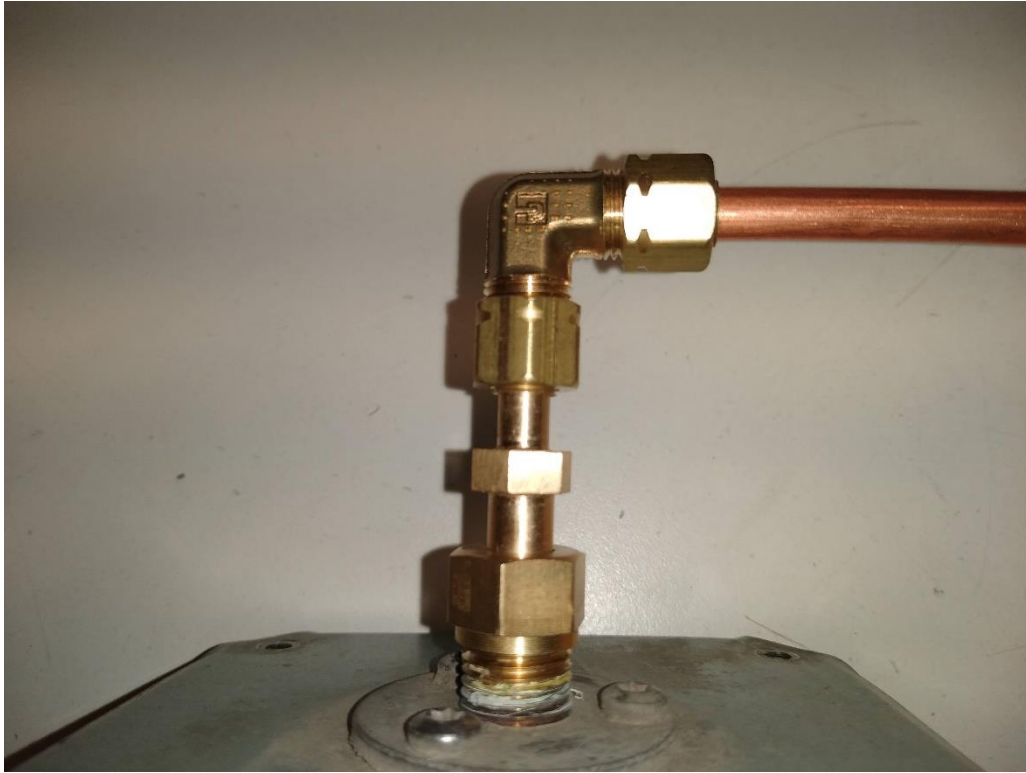
Slide the brass nut onto the larger diameter leg of the fitting. Slide the copper ferrule on after the nut. Slide the fitting into the heater inlet.



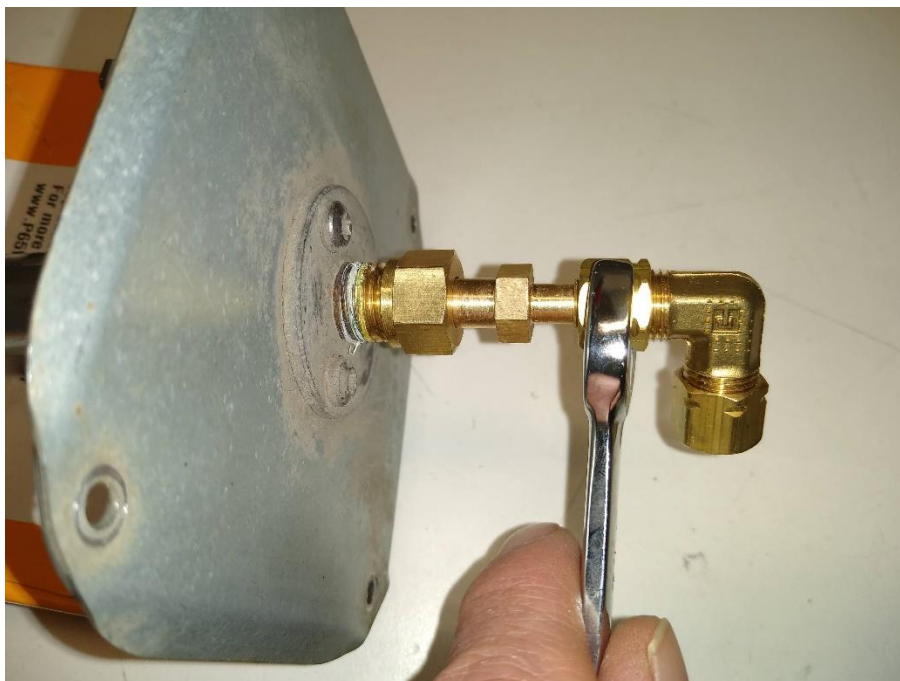
Slide the ¼" X ¼" double compression fitting onto the ¼" leg of the Propex fitting but do not tighten.



Route your ¼" supply tubing from your regulator and slide it into the empty socket in the ¼" to ¼" fitting. Allow the position of the fitting to self-adjust to provide the most direct routing of the supply tubing.



Tighten both compression nuts of the ¼" to ¼" fitting.



Finally tighten the large 15mm brass nut at the heater inlet.



Once you are finished routing the supply line, turn the gas on and follow all leak detection protocols as usual. We use a dish soap and water solution to check for leaks.